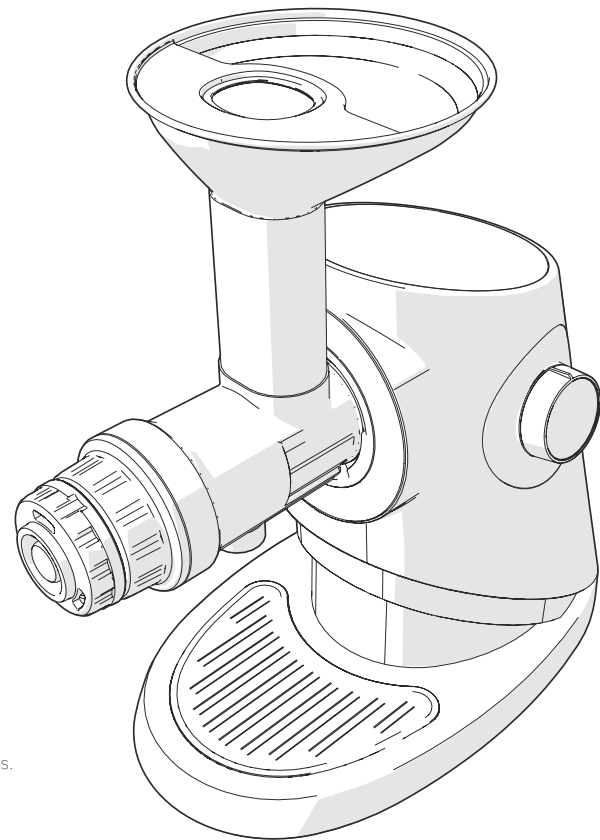


*Sana*  
**ULTIMATE**  
STAINLESS STEEL JUICER

## INSTRUCTION MANUAL

- 02 *Important safeguards*
- 03 *Safety precautions*
- 05 *Ingredient preparation and troubleshooting*
- 08 *Parts and assembly*
- 12 *Operating the Juicer*
- 16 *Cleaning the Juicer*
- 17 *Recommended juicer settings*
- 18 *Specifications*

- 1. This juicer is intended for household use only.
- 2. Please read this instruction manual thoroughly before using the juicer.
- 3. After reading, please keep this instruction manual in a readily accessible place.
- 4. The product specifications are subject to change without notice for quality improvement purposes.
- 5. Please keep your receipt and warranty card and contact your dealer for any service or warranty needs.





## IMPORTANT SAFEGUARDS

1. WHEN USING ELECTRICAL APPLIANCES, BASIC SAFETY PRECAUTIONS SHOULD ALWAYS BE FOLLOWED. READ ALL INSTRUCTIONS.
2. TO PROTECT AGAINST RISK OF ELECTRICAL SHOCK, DO NOT PUT THE MAIN BODY (MOTOR) IN WATER OR ANY OTHER LIQUID.
3. THIS APPLIANCE IS NOT INTENDED FOR USE BY CHILDREN OR BY PERSONS WITH REDUCED PHYSICAL, SENSORY, OR MENTAL CAPABILITIES, OR LACK OF EXPERIENCE AND KNOWLEDGE. CLOSE SUPERVISION IS NECESSARY WHEN ANY APPLIANCE IS USED NEAR CHILDREN. CHILDREN SHOULD BE SUPERVISED TO ENSURE THAT THEY DO NOT PLAY WITH THE APPLIANCE.
4. TURN THE APPLIANCE OFF, THEN UNPLUG FROM OUTLET WHEN NOT IN USE, BEFORE ASSEMBLING OR DISASSEMBLING PARTS AND BEFORE CLEANING. TO UNPLUG, GRASP THE PLUG AND PULL FROM THE OUTLET. NEVER PULL FROM THE POWER CORD.
5. AVOID CONTACTING WITH MOVING PARTS.
6. DO NOT OPERATE ANY APPLIANCE WITH A DAMAGED CORD OR PLUG, OR AFTER THE APPLIANCE MALFUNCTIONS, OR IS DROPPED OR DAMAGED IN ANY MANNER. RETURN APPLIANCE TO THE NEAREST AUTHORIZED SERVICE FACILITY FOR EXAMINATION, REPAIR OR ELECTRICAL OR MECHANICAL ADJUSTMENT.
7. THE USE OF ATTACHMENTS NOT RECOMMENDED OR SOLD BY THE MANUFACTURER MAY CAUSE FIRE, ELECTRIC SHOCK OR INJURY.
8. DO NOT LET CORD HANG OVER EDGE OF TABLE OR COUNTER.
9. ALWAYS MAKE SURE HOPPER IS SECURELY FASTENED IN PLACE BEFORE MOTOR IS TURNED ON. DO NOT UNFASTEN HOPPER WHILE JUICER IS IN OPERATION.
10. BE SURE TO TURN SWITCH TO OFF POSITION AFTER EACH USE OF YOUR JUICER. MAKE SURE THE MOTOR STOPS COMPLETELY BEFORE DISASSEMBLING.
11. DO NOT PUT YOUR FINGERS OR OTHER OBJECTS INTO THE JUICER WHILE IT IS IN OPERATION. IF FOOD BECOMES LODGED IN OPENING, USE FOOD PUSHER OR ANOTHER PIECE OF FRUIT OR VEGETABLE TO PUSH IT DOWN. WHEN THIS METHOD IS NOT POSSIBLE, TURN THE MOTOR OFF AND DISASSEMBLE JUICER TO REMOVE THE REMAINING FOOD.
12. DO NOT USE OUTDOORS.
13. DO NOT PLACE ON OR NEAR A HOT GAS OR ELECTRIC BURNER OR IN A HEATED OVEN.
14. DO NOT USE APPLIANCE FOR OTHER THAN INTENDED USE.
15. DO NOT USE THE APPLIANCE IF THE ROTATING SIEVE IS DAMAGED.
16. DO NOT ATTEMPT TO DEFEAT THE COVER INTERLOCK MECHANISM.
17. NEVER FEED DOUGH BY HAND. ALWAYS USE FOOD PUSHER.

## SAVE THESE INSTRUCTIONS



## Safety precautions

**Warning** Failure to comply with the label instructions may result in injury.

**Do not plug or unplug the power cord with wet hands.**

**Only use with 120 V power**

Failure to follow this instruction may result in electric shock, fire, or unsatisfactory performance. Connecting to a different voltage may shorten the motor's lifespan or cause it to malfunction.

**Securely plug the power cord all the way into an outlet.**

Failure to follow this instruction may result in electric shock or fire.

**Do not forcibly bend, tie, or pull the power cord. Do not place it near a high-temperature source or heat source, such as a gas cooktop. Do not place any heavy objects on top of it, wedge it into a narrow space, or alter it.**

Doing so may damage the power cord, causing fire or electric shock.

**Do not attempt to open or repair the juicer. Do not insert any foreign objects, such as a knife blade or screwdriver, into any seams or holes in the main body.** Failure to follow this instruction may result in fire, electric shock, injury, or malfunction. For warranty service or repair, please contact the retailer where you purchased the juicer.

**If the power cord is damaged, do not attempt to repair or alter it yourself. Please replace it with a new power cord.**

Failure to follow this instruction may result in fire, electric shock, or injury.

**Do not let the main body come in contact with water or splash water over it.** Make sure that no water or foreign material enters the switch on the product.

**Do not operate the switch with wet hands.**

Failure to follow this instruction may result in electric shock or fire.

**For your safety, check whether your outlet is grounded. (Make sure that you use a grounded outlet.) They should not be grounded to gas pipes, plastic water pipes, or telephone lines.** Failure to follow this instruction may result in electric shock, fire, malfunction, or explosion.

**Never attempt to dismantle any parts of the drum set or put foreign objects such as a finger or spoon into the feed chute or juice outlet while the juicer is running.**

Failure to follow this instruction may result in injury, accident, or malfunction.

**Do not use the product within reach of children.**

Children should be supervised to make sure that they do not play with this product. Children may accidentally touch or push over the product, causing injury, product damage, or malfunction.

**Do not use the juicer before familiarizing yourself with its operation.**

Anyone with physical or mental limitations or who are unfamiliar with the juicer should not operate it without supervision.

**Do not start the product without the drum cap attached.**

Failure to follow this instruction may cause injury or malfunction.

**Do not operate the product unless the drum set is securely attached to the main body.** Failure to follow this instruction may cause injury or malfunction.

**If there is a gas leak, such as a gas line leak, open the windows, thoroughly ventilate the area, and do not touch the power cord.** Failure to follow this instruction may result in injury, malfunction, or fire.



## Safety precautions

**Warning** Failure to comply with the label instructions may result in injury.

**Do not put your fingers or other foreign objects in the hole into which the auger fits. Never insert a chopstick, spoon, etc., into the juice/pulp outlet.** Failure to follow this instruction may cause injury or malfunction.

**Do not use anything, such as a chopstick, spoon, or hard object other than the pusher, when you push your ingredients into the feed chute.** Failure to follow this instruction may cause injury or malfunction.

**Do not move the main body, or disassemble or assemble the drum set or parts, while the product is running.** Failure to follow this instruction may cause injury or malfunction. Make sure that you stop the product and unplug the power cord first.

**Pay attention while using the product to prevent articles you may be wearing, such as a necktie, long necklace, scarf, etc., from being pulled into the feed chute.** Failure to follow this instruction may result in injury, malfunction, or damage.

**Place the product on a flat, even surface in an organized space when you use it.** Failure to follow this instruction may cause injury or malfunction.

**Do not subject the product to extreme shock or drop it.** Failure to follow this instruction may result in electric shock, damage, or fire.

**If the product produces unusual sounds, excessive heat, or smoke, stop using it immediately and contact your retailer.**  
The smell that a new product produces naturally goes away after a few uses.

**Disconnect the power cord from the outlet when the product is not in use. Make sure that you unplug the power cord by pulling the plug straight out.** Pulling the cord may result in injury, electric shock, or fire.

**Do not clean the product at 176 F or a higher temperature. Do not put it in a dryer, microwave, etc.** Failure to follow this instruction may cause malfunction or deformation of parts.

**The appliance weighs approximately 16.75 lb. When you move it, make sure that you securely hold its main body with both hands.** If you move it by just holding the drum set or holding the product incorrectly, the main body may fall, causing injury or malfunction.

**This appliance is for household use only. Do not use it for commercial purposes.**  
Do not attempt to extract juice from a large amount of ingredients at once. Doing so may damage the parts.

**Do not operate the juicer with the juice plug attached.** This can cause juice to leak into the motor base. Attach the juice plug after juicing is finished, to prevent dripping when removing drum from the main body.

**Note that small lines or circles in stainless steel parts are the result of the manufacturing process and not a defect.**



## Safety precautions

### Ingredients that require attention and how to prepare them

When juicing large batches, repeat the process of juicing about 2 lb of an ingredient, disassembling the product, and then washing it.

With ingredients that have lost their freshness after being refrigerated for a long time, soak them in fresh water for 10 minutes before use.

When processing dried ingredients (e.g., dried herbs), make sure that they are completely dry to the point where you can easily crush them with your fingers.

<b>Pear, Kiwi, Korean Melon, Apple, Grape, etc.</b>	You can extract juice from pears, kiwis, and Korean melons, including their seeds and skin. However, apple seeds are poisonous and the stem end of Korean melons tastes bitter, so it is better to remove those before juicing. With grapes, pluck each grape from the bunch in advance.
<b>Watermelon, Pomegranate, Orange, Grapefruit, Melon, Lemon, etc.</b>	Remove the outer skin of these fruits and vegetables, and then cut the flesh into pieces small enough to go through the feed chute. With pomegranates, peel their outer rind, and only use its seeds and arils.
<b>Mango, Persimmon, Peach, Plum, Cherry, Japanese Apricot, etc.</b>	Make sure that you remove all the unchewable hard seeds or pits before you juice these fruits. Otherwise, the product may stop operating or its parts may become damaged.
<b>Water Parsley, Ashitaba, Wheat Grass, etc.</b>	Cut these tough, long fibrous vegetables into 2-3 in. pieces. It will be more manageable if you grab a handful of those pieces and then insert them into the product.
<b>Ginger, Carrot, Dandelion, Potato, Deodeok, Pine Needle, Kudzu, etc.</b>	Make sure that you clean root vegetables under running water and remove all dirt and other foreign substances before use. Thinly slice fibrous ingredients, such as ginger and kudzu, and slowly insert a small amount at a time. With pine needles, soak them in water for about an hour and then insert them into the product while they are still wet.

**Do not juice or process the following ingredients. They can damage the juicing screen and auger.**

- Dry or oily ingredients such as sesame seeds, coffee beans, and dried beans.
- Produce without sufficient fiber including linden fruits, prickly pears, and aloe vera.
- Canned or soaked fruits.
- Spices such as black pepper or cinnamon.
- Dried grains including rice, barley, and wheat.
- Frozen ingredients including frozen fruits or meat. These must be thawed slightly before processing.
- Pitted fruits such as cherries, peaches, plums, and mangoes. The pit must be removed before juicing.

**Please consume any juice immediately for the best taste and nutrition. Otherwise store in the refrigerator up to 24 hours.**

**When using the homogenizing screen, please insert ingredients slowly and allow the juicer to process them before adding more.**

**Do not juice pulp a second time.**

**Thaw any frozen ingredients slightly, and cut into small pieces before processing.**

**Do not operate the juicer empty without produce in it.**

**Do not let the product run while it is empty, before you insert any ingredients in it.**



## Troubleshooting

**Do not insert anything into the feeding tube besides the pusher, including kitchen utensils or tools. It may get caught in the auger, causing the auger and juicing screen to break. It can also cause personal injury.**

**Do not overfeed the juicer. Allow the juicer to process each ingredient before adding more. Overfeeding can result in pulpier juice, and can cause the juicer to jam.**

**Do not get water or juice into the operating dial. It can cause damage or electrical shock.**

**Do not operate the juicer with the juice plug attached. Juice can back up into the motor gasket causing damage or electrical shock.**

**Make sure to thoroughly dry the juicer after use. The stainless steel parts can corrode or rust if exposed to salt or other minerals.**

**Please check the following troubleshooting steps before requesting repair. If you need service, please contact the retailer from whom you purchased the juicer. Be sure to have your warranty card available when contacting them.**

### **The juicer makes a strange or loud sound.**

- It is normal for the juicer to be loud when processing solid ingredients like carrots or beets.
- Make sure the juicer is on a flat and level surface when operating it.
- Make sure that no foreign objects such as small pebbles got into the feeding tube.

### **The juicer is giving a low yield of juice.**

- Make sure the juicing screen is clean and not clogged.
- Only use fresh and firm produce. Do not attempt to juice frozen produce.
- Soft fruits such as peaches and soft apples do not have a sufficient water content to make much juice and instead make more of a puree. Use these types of ingredients as complements to other juices.

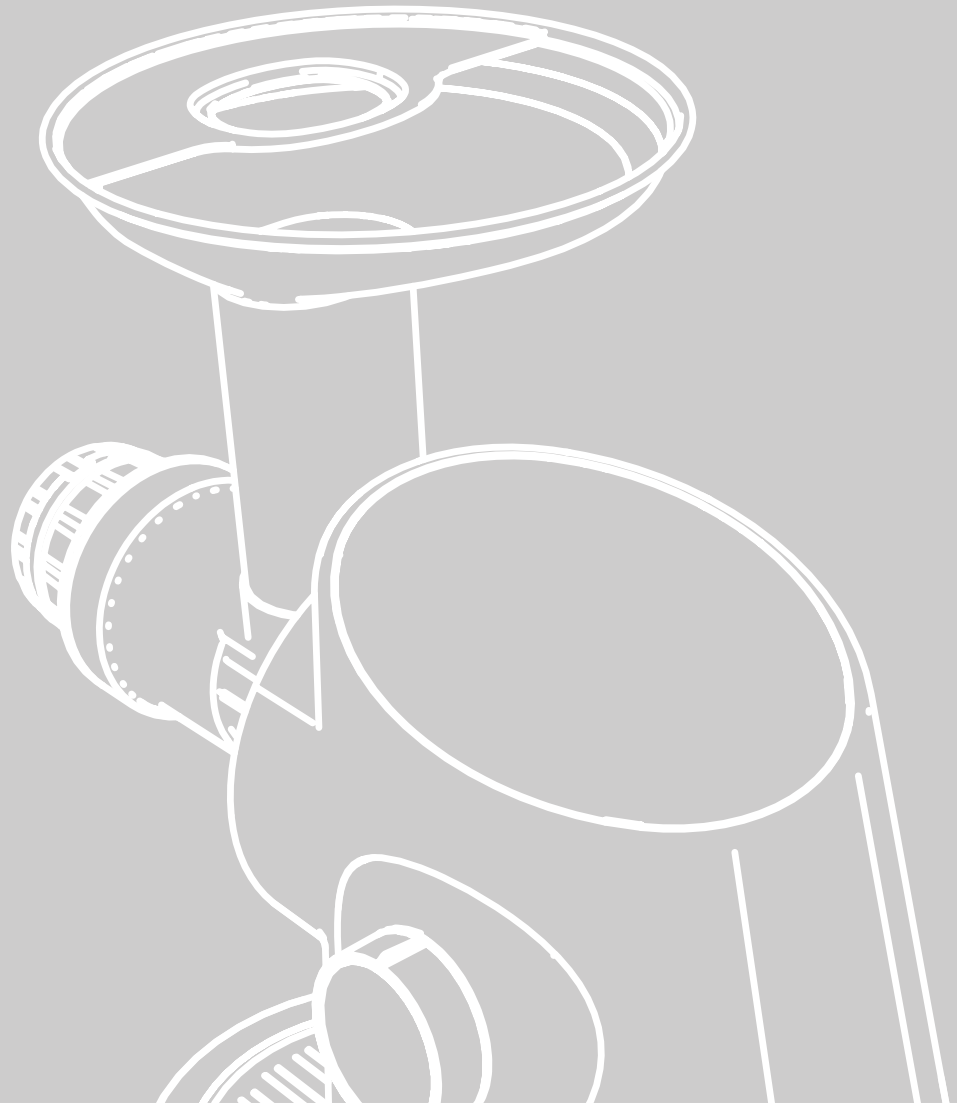
### **The auger stopped rotating**

- Make sure not to overfeed the juicer. The auto reverse function will attempt to clear any jams.
- Cut firm ingredients like beets and carrots into smaller pieces, and feed them slowly.
- Thaw any frozen produce slightly before processing.

### **The seal on the screen is torn**

- The seals on the screens are replaceable.
- To replace a broken seal, unscrew the ring at the front of the screen, and peel out the seal. Insert a new seal by pressing it in on one side and pushing it in around the circumference.
- Replacement seals are available from your authorized Sana retailer.

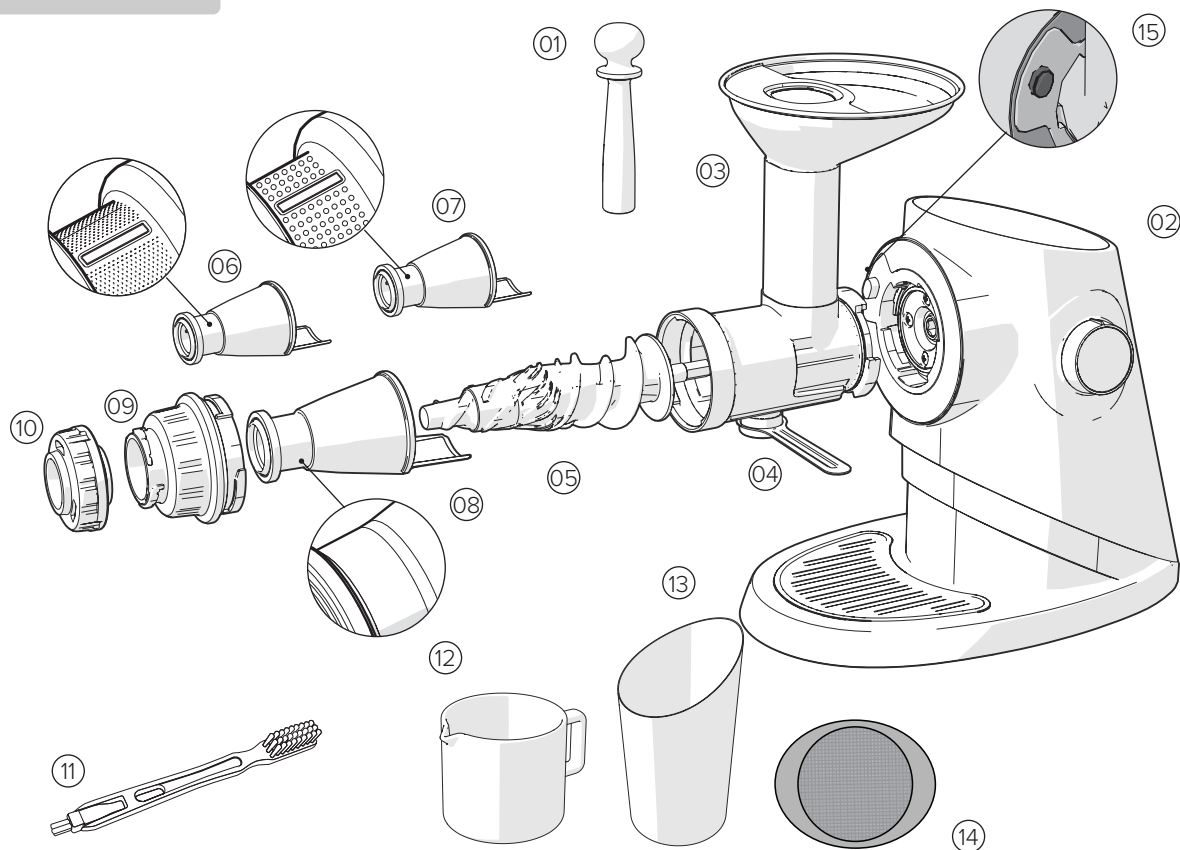
## **1 Parts and Assembly**





## Part Names

- ① Pusher
- ② Main body
- ③ Drum
- ④ Juice plug
- ⑤ Auger
- ⑥ Fine juicing screen
- ⑦ Coarse juicing screen
- ⑧ Homogenizing screen
- ⑨ Drum cap
- ⑩ Pulp regulation knob
- ⑪ Cleaning brush
- ⑫ Juice glass
- ⑬ Pulp cup
- ⑭ Juice glass strainer
- ⑮ Release button

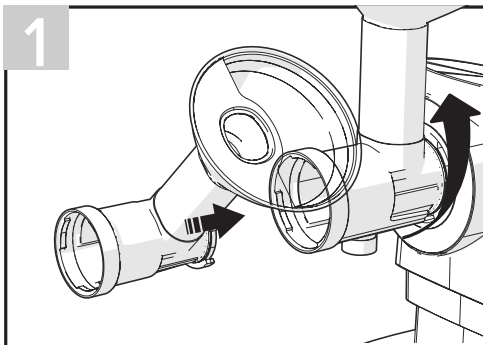
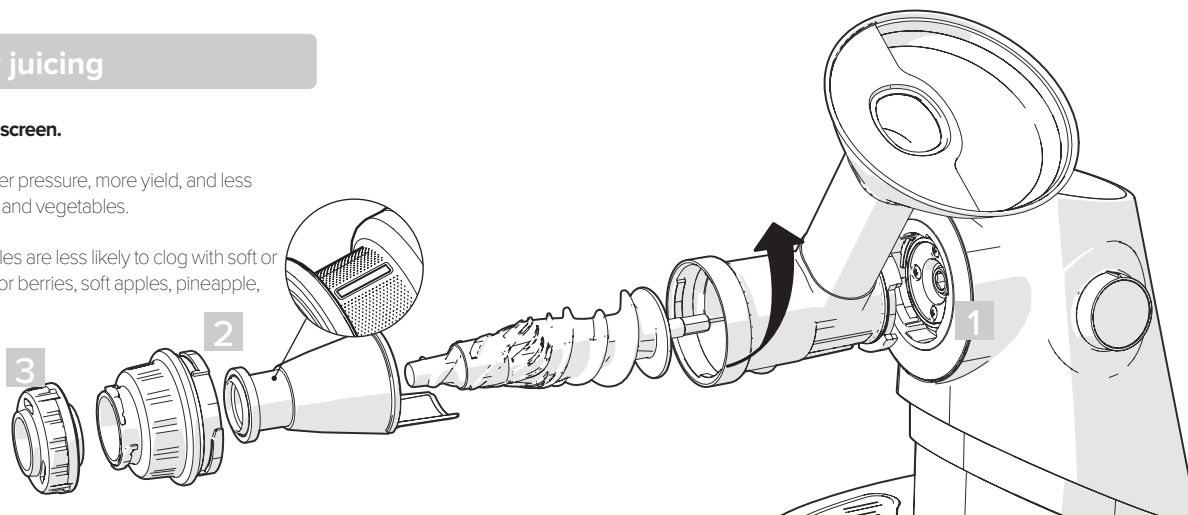


## Assembly for juicing

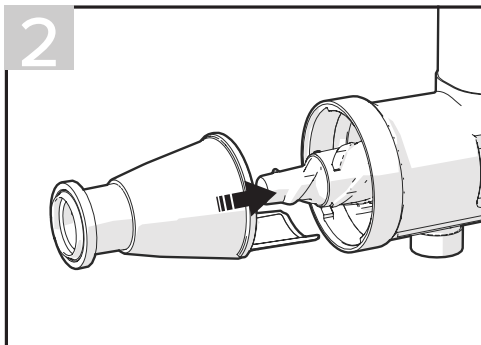
### Select the proper juicing screen.

**Fine screen:** Creates higher pressure, more yield, and less pulp. Suitable for firm fruits and vegetables.

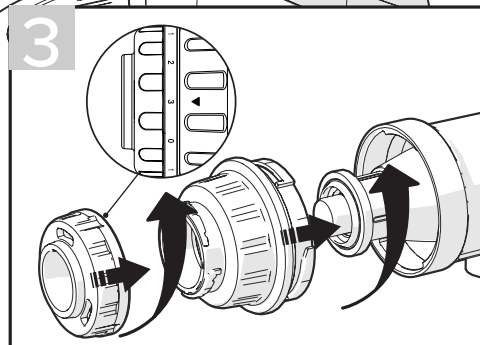
**Coarse screen:** Bigger holes are less likely to clog with soft or fibrous produce. Suitable for berries, soft apples, pineapple, and other soft fruits.



1. Insert the drum into the main body and turn the drum counterclockwise until it is securely engaged.



2. Attach the auger and juicing screen to the assembled drum. Insert the auger's shaft into the main body until it is securely engaged.

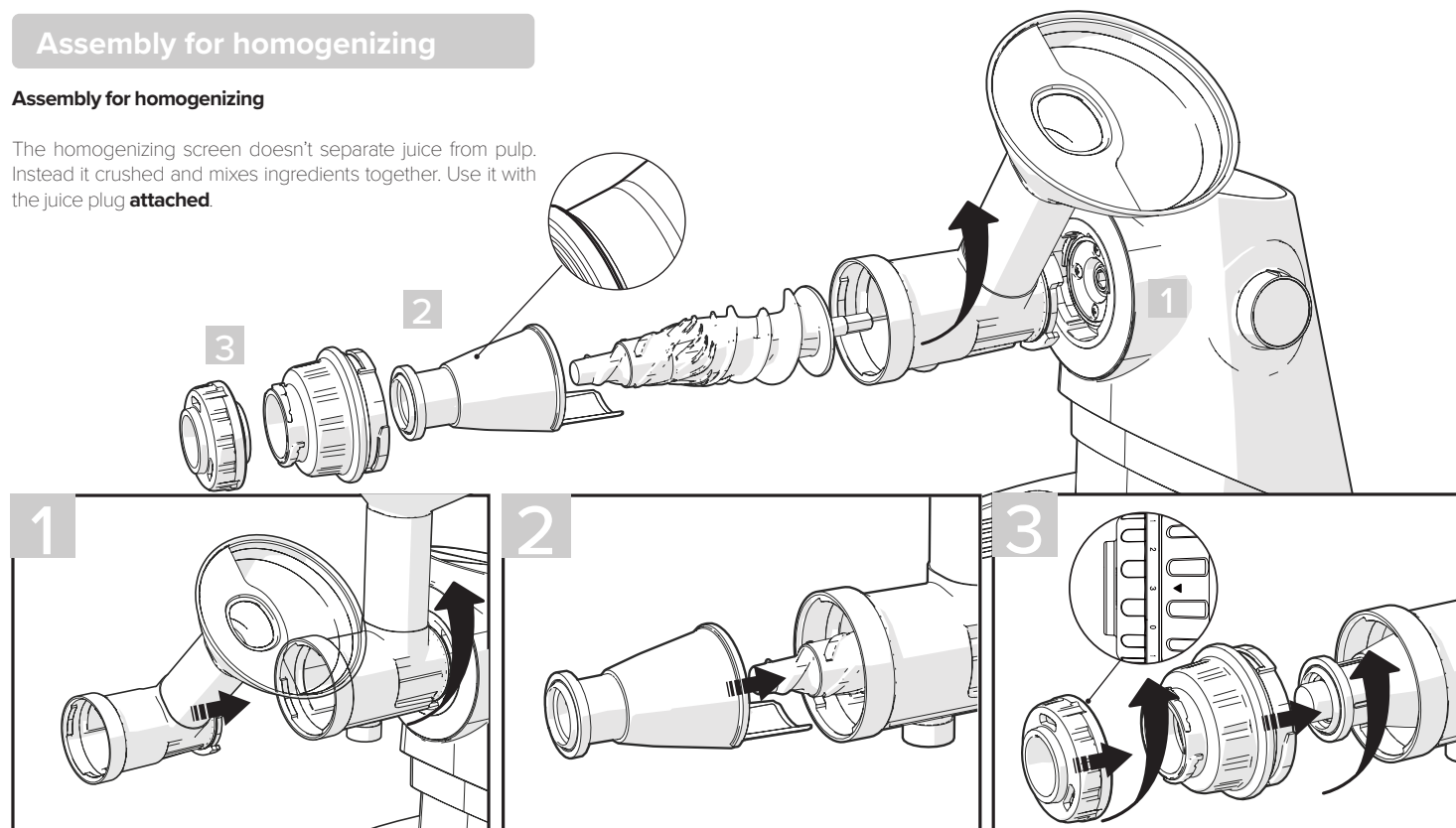


3. Lock the drum set into position by turning the drum cap. Attach the pulp regulation knob to the drum cap. Set at low pressure (1) for softer fruit. Set at higher pressure (2 or 3) for harder fruits and vegetables.

## Assembly for homogenizing

### Assembly for homogenizing

The homogenizing screen doesn't separate juice from pulp. Instead it crushed and mixes ingredients together. Use it with the juice plug **attached**.

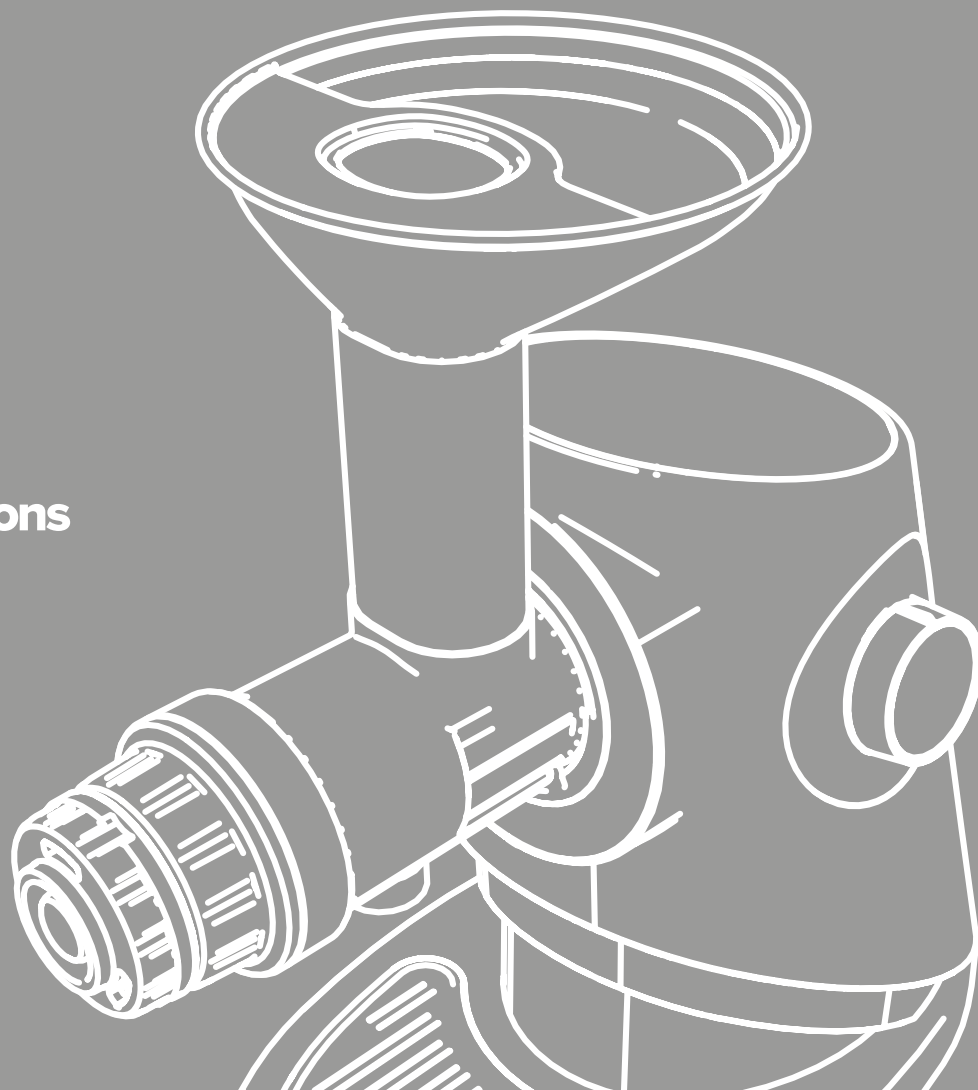


1. Insert the drum into the main body and turn the drum counterclockwise until it is securely engaged.

2. Attach the auger and homogenizing screen to the assembled drum. Insert the auger's shaft into the main body until it is securely engaged.

3. Lock the drum set into position by turning the drum cap. Attach the pulp regulation knob to the drum cap. Set at pressure (3) for homogenizing.

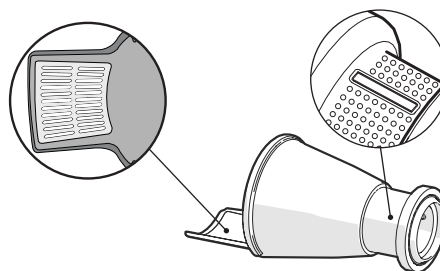
## 2 Operation instructions



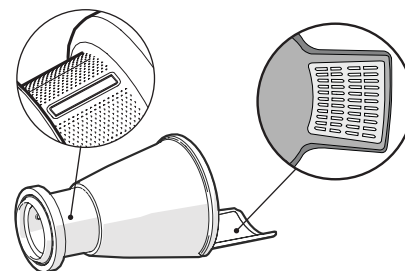
## Juicing

**Use the fine screen for most produce. If juicing soft produce like berries, pineapple, peaches, softer apples, etc., use the coarse screen.**

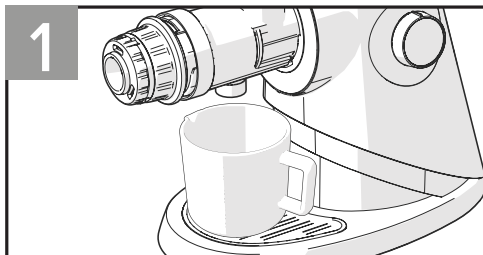
Tip: If you prefer virtually pulp-free juice, place the strainer on the juice glass before juicing.



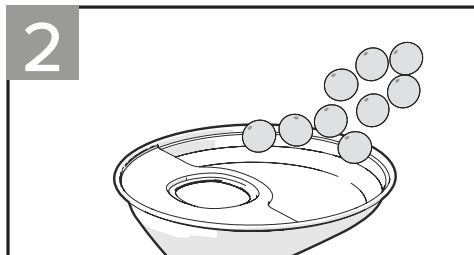
**coarse screen**



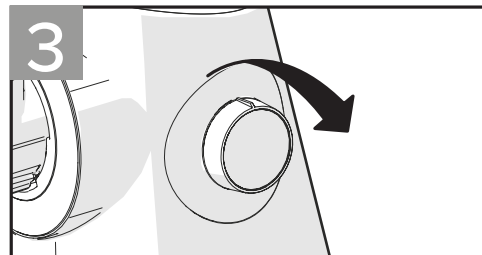
**fine screen**



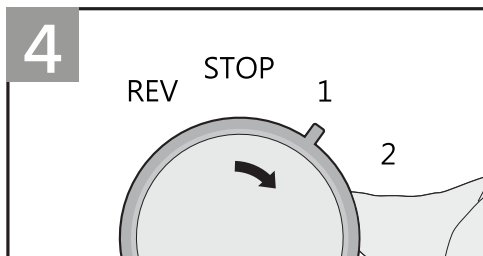
Place the juice glass under the juice outlet. Do not attach juice plug. Place the pulp cup under the drum cap.



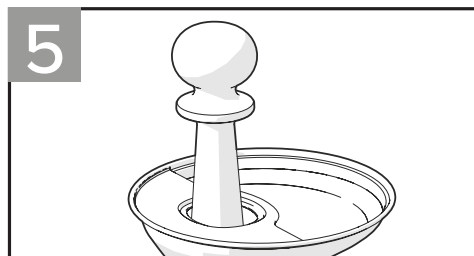
Insert a small amount of produce into the feeding tube.



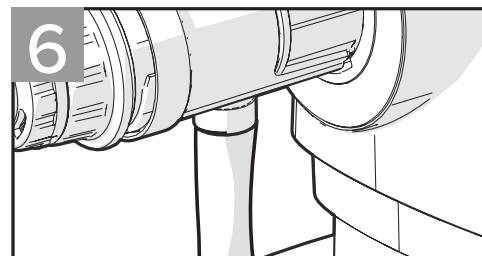
Turn on the power dial.



Choose the speed according to the chart on page 17



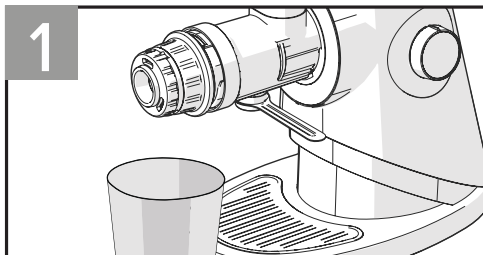
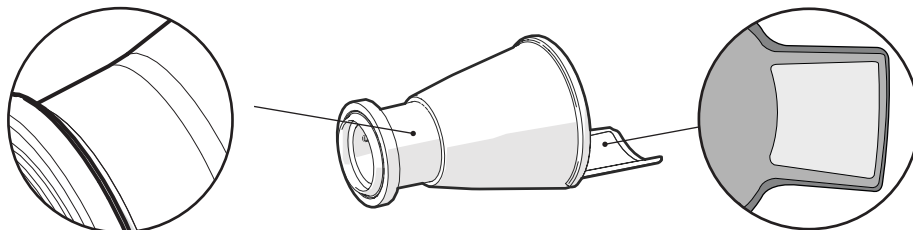
Smaller items will self-feed. Use the pusher for larger items like carrots or firm apples.



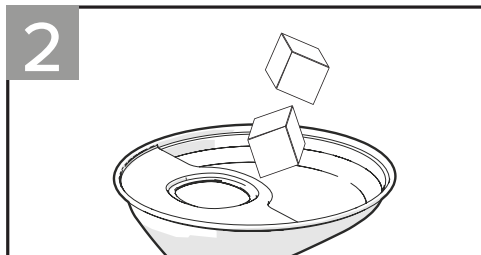
Ensure that the juice plug is not attached. If attached, juice can back up into the motor base.

## Homogenizing

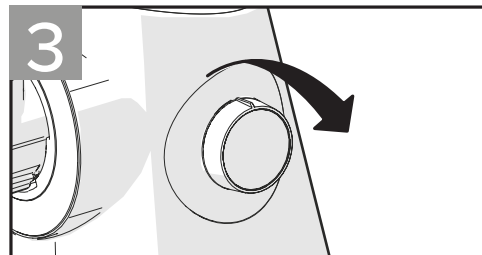
Use the homogenizing screen (the screen with no holes).



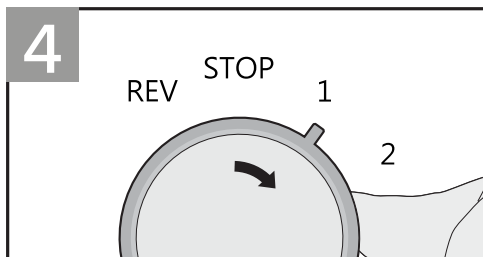
Place a container under the drum cap and attach the juice plug.



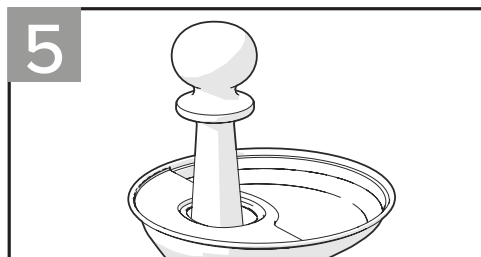
Insert a small amount of ingredients at a time.



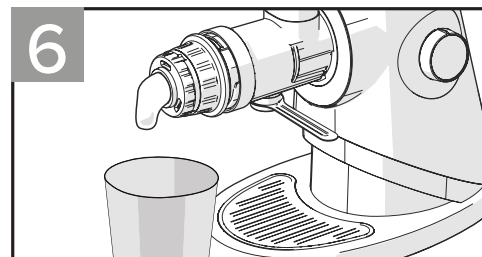
Turn on the power dial.



Choose the speed according to the chart on page 17

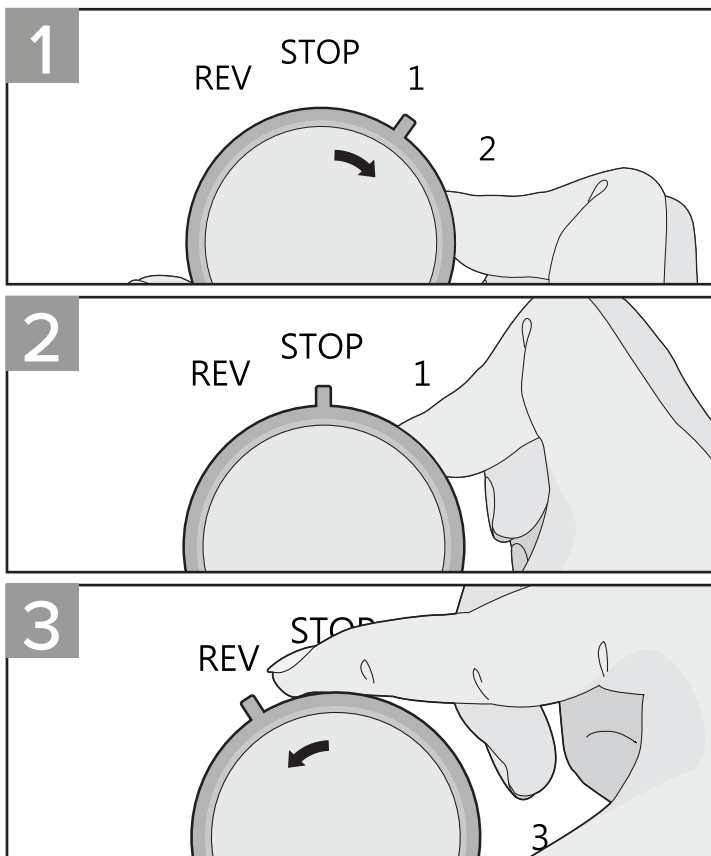


Use the pusher if needed.



Homogenized ingredients come out of the pulp outlet.

## About the Power Dial and Auto-Reverse Option



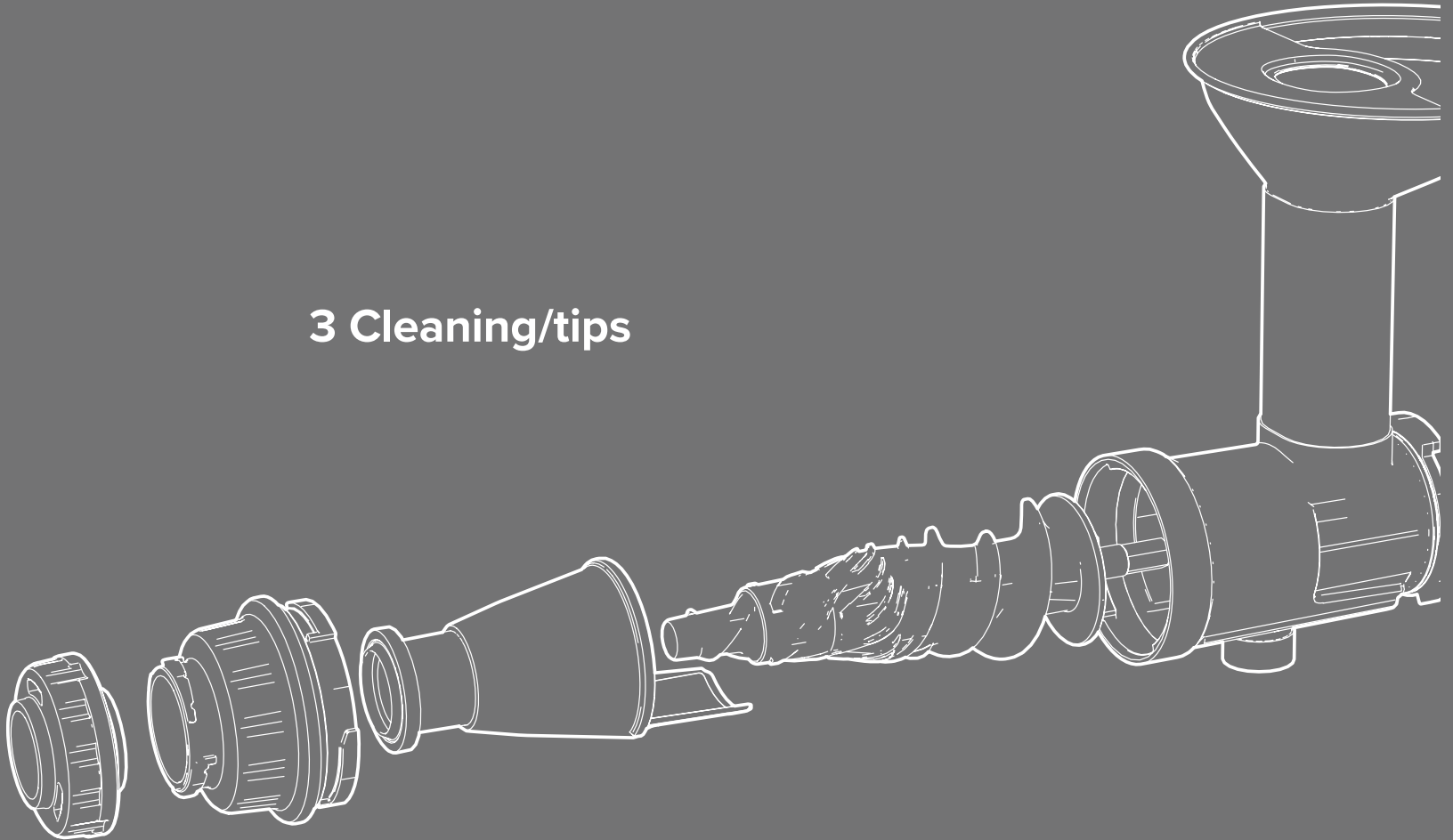
### Power Dial Operation

1. Turn the dial clockwise to the recommended setting to start the juicer.
2. Turning the dial to STOP causes the motor to gradually stop to ensure safety.
3. Holding the dial in the REV position causes the motor to run backward slowly. Use this setting to clear stuck or overfed ingredients only if the auto reverse mechanism doesn't engage.

### About the Auto Reverse System

1. If the juicer is overfed and jams, the auto reverse system will automatically stop the motor and then run in reverse for a few seconds to clear the jam. It will then begin juicing again at the previous speed setting.
2. If the jam doesn't clear, the juicer will attempt the auto reverse setting again. If the jam doesn't clear after a few attempts, the juicer will automatically shut off.
3. If the juicer shuts off after attempting to clear the jam, hold the power dial in the REV position until the jam is clear.

### 3 Cleaning/tips

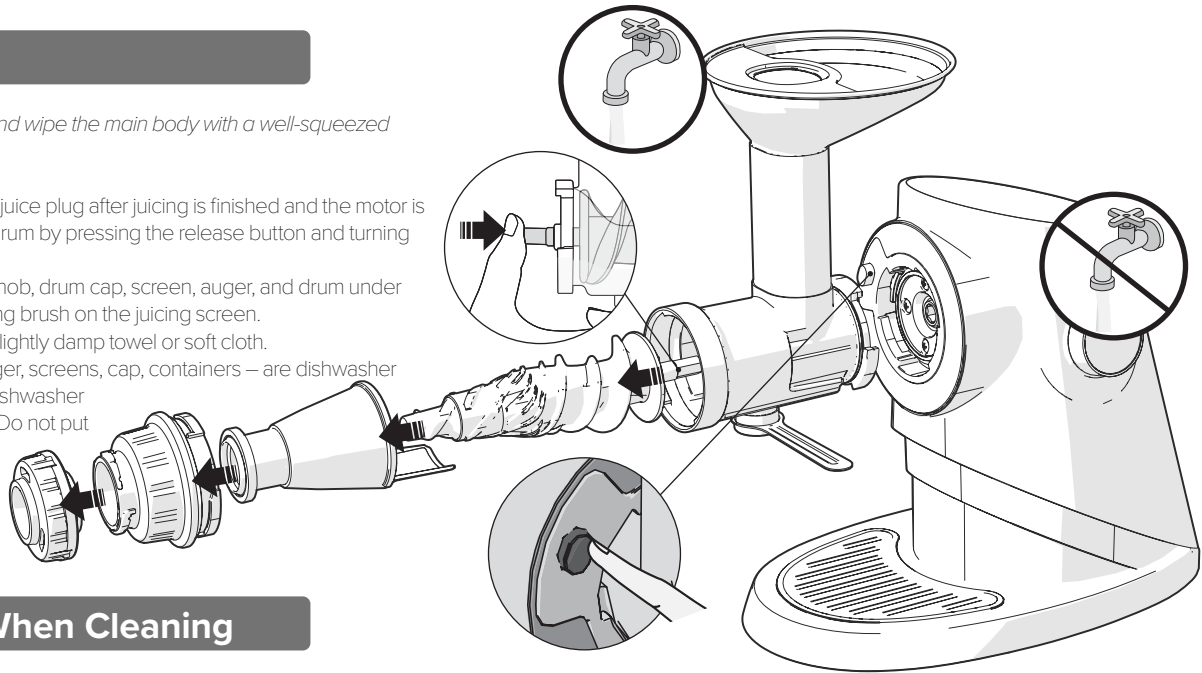




## Cleaning

*Wash the drum set in water, and wipe the main body with a well-squeezed damp towel.*

1. To prevent drips, attach the juice plug after juicing is finished and the motor is turned off. Then remove the drum by pressing the release button and turning the drum clockwise.
2. Wash the pulp regulation knob, drum cap, screen, auger, and drum under running water. Use the cleaning brush on the juicing screen.
3. Wipe the main body with a lightly damp towel or soft cloth.
4. All juicing parts – drum, auger, screens, cap, containers – are dishwasher safe as well. Wash with mild dishwasher detergent on the upper rack. Do not put pusher in dishwasher.



## Precautions When Cleaning

1. Don't touch the juicer or power cord if your hands are wet. It can cause damage to the juicer or an electric shock.
2. Wait for the motor to stop before removing the drum set. The motor turns off gradually for safety. Removing the drum set before the motor stops can damage it or cause injury.
3. Clean the juicer immediately after use. If you wait, juice residue can dry and cause the juicing parts to get stuck and difficult to disassemble. This can cause a clogged juicing screen.
4. Wipe the main body with a lightly damp towel or soft cloth. The juicer isn't 100% waterproof, and water entering it can cause an electrical short or shock.
5. Do not clean the juicer with hot water or subject it to high temperatures. Do not clean it with abrasive cleaners, scrubby sponges or sharp tools as these can scratch stainless steel.
6. Make sure to completely dry the juicer and parts after washing. Salts can cause corrosion of stainless steel.

## Motor speed settings recommended for different ingredients

INGREDIENT	1	2	3	4
Berries	●			
Soft apples	●			
Pineapple		●		
Peach		●		
Firm apples			●	
Almonds (softened for almond milk)			●	
Carrot			●	
Leafy greens / celery			●	
Sorbet			●	
Oil extraction			●	
Citrus				●
Tomato				●
Grapes				●

Product Specifications

Product Name	Sana Ultimate Juicer
Model Name	929
Rated Voltage	120 V
Rated Frequency	60Hz
Rated Power	150 W
Consumption	
Revolutions	40/65/90/120 rpm
Per Minute	
Cord Length	4.6 ft
Motor	BLDC Motor
Product Weight	16.75 lb
External Dimensions	Width: 15 in.
	Length: 8 in.
	Height: 15 in.

Notes:

Notes:

# Sana

OIL EXTRACTOR®

**Increase the versatility of your Sana Ultimate juicer** with the Sana 702 oil extractor attachment. Using the Sana Ultimate's powerful motor, the Sana oil extractor makes pressing your own oil simple and easy. Just attach the oil extractor to your Sana Ultimate juicer, turn on the juicer, and pour your seeds or chopped nuts into the hopper. Almost immediately, oil will begin pouring into the included glass oil pitcher. Make just as much fresh cold-pressed oil as you need.

The Sana oil extractor is designed to extract oil from many different seeds including flax, sesame, sunflower, pumpkin, black cumin, rape, hemp, evening primrose, and poppy. And it has a "surprise" feature: processing oat groats will make perfect oatmeal flakes!

The Sana oil extractor is made from heavy-duty food-grade stainless steel. This not only ensures durability and hygiene, but it also makes it easy to clean. It is made from just a few solid parts which can be rinsed in warm water.





**Purchasers of the Sana Ultimate have exclusive access to our Sana Club site.**

Get access to exclusive videos, new product announcements, special discount offers, recipes, and a members-only forum for tips and advice moderated by our Sana team. Register your Sana Ultimate and get an additional one year warranty on the motor. It's easy to do. Just visit the website below, or scan the QR code on your mobile device.



[www.sana-club.com](http://www.sana-club.com)

*Sana*  
**ULTIMATE**  
STAINLESS STEEL JUICER

[www.sanausa.com](http://www.sanausa.com)  
[help@sanausa.com](mailto:help@sanausa.com)  
[register@sanausa.com](mailto:register@sanausa.com)